



Property Description

MAIN DESCRIPTION

A BEAUTIFUL VICTORIAN VILLA ON THIS POPULAR STREET, CLOSE TO THE TOWN CENTRE AND ALL OF ITS AMENITIES. WITH A WEALTH OF CHARM AND CHARACTER AND NOW REQUIRING SOME MODERNISATION THIS A PERFECT BLANK CANVAS TO CREATE A TRULY STUNNING PROPERTY. The house when briefly described comprises, entrance lobby, hallway, bay fronted lounge, rear facing sitting room, dining room and kitchen to the ground floor. On the first floor are four well proportioned bedrooms, bathroom and w/c. Enclosed yard to the rear and gated fore garden.

ENTRANCE PORCH

HALLWAY

LOUNGE

15' 6" x 13' 3" (4.72m x 4.04m) max

SITTING ROOM

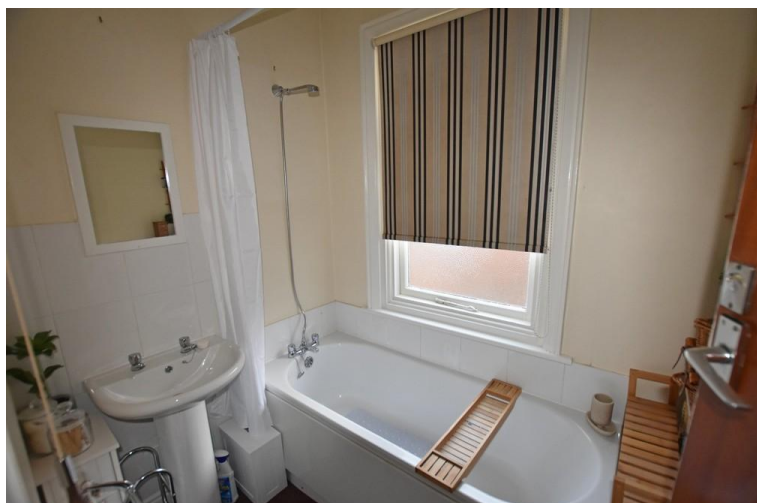
12' 3" x 11' 6" (3.73m x 3.51m)

DINING ROOM

11' 5" x 9' 6" (3.48m x 2.9m)

KITCHEN

11' x 9' 6" (3.35m x 2.9m)



LANDING

BEDROOM

13' 1" x 11' 4" (3.99m x 3.45m)

BEDROOM

12' 4" x 11' 7" (3.76m x 3.53m)

BEDROOM

12' 6" x 9' 6" (3.81m x 2.9m)

BEDROOM

9' 2" x 5' 9" (2.79m x 1.75m)

BATHROOM

WC

REAR YARD