



£800,000

CRIMBLES COURT, SCALBY ROAD, SCALBY, SCARBOROUGH, YO13 0NT

- Grand Majestic House
- Beautiful Grounds
- Scalby Village Location
- Six Bedrooms

A GRAND AND MAJESTIC HOUSE IN THIS SECLUDED SOUGHT-AFTER AREA, MAGNIFICENT GROUNDS, BEAUTIFUL ARCHITECTURE. SET IN THE BEAUTIFUL VILLAGE OF SCALBY ON THE NORTH SIDE OF SCARBOROUGH WE HAVE THIS MAGNIFICENT SIX BEDROOM HOUSE, STEEPED IN CHARACTER AND PERIOD FEATURES, TUCKED AWAY DOWN A PRIVATE DRIVE AND IMMACULATE GARDENS.



**TIPPLE UNDERWOOD ESTATE
AGENTS**

3 Coldyhill Lane, Scarborough, North
Yorkshire, YO12 6SF

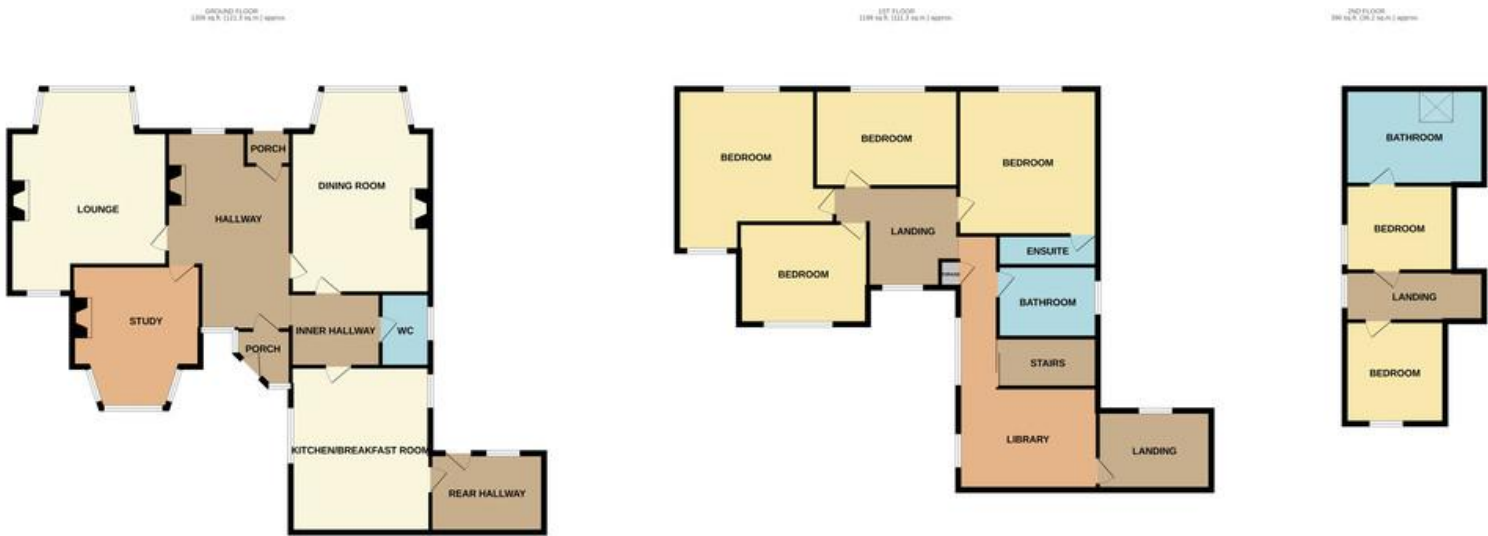
CONTACT

www.tippleunderwood.co.uk

01723 350299

mail@tippleunderwood.co.uk

Agents Note: Whilst every care has been taken to prepare these sales particulars, they are for guidance purposes only. All measurements are approximate and for general guidance purposes only and whilst every care has been taken to ensure their accuracy, they should not be relied upon and potential buyers are advised to recheck the measurements



TOTAL FLOOR AREA : 2894 sq.ft. (268.9 sq.m.) approx.
Whilst every attempt has been made to ensure the accuracy of the floorplan contained here, measurements of doors, windows, rooms and any other items are approximate and no responsibility is taken for any error, omission or mis-statement. This plan is for illustrative purposes only and should be used as such by any prospective purchaser. The services, systems and appliances shown have not been tested and no guarantee as to their operability or efficiency can be given.
Made with Metropix ©2024



Property Description

MAIN DESCRIPTION
The main house when briefly described comprises, entrance vestibule, grand hallway with sweeping staircase and a snug sitting area incorporating a lovely open fireplace, light and airy lounge, dining room, study, cloakroom, breakfast kitchen and rear lobby. On the first floor is a stunning galleried landing, library area, four well appointed bedrooms one with ensuite shower and family bathroom. To the second floor are two further bedrooms and bathroom, also access to the walk-in loft. Crimbles Court sits in stunning grounds with long pebbled driveway leading to the detached double garage, beautiful lawns, mature trees and plants paved seating area, further secret garden, paved courtyard and outhouses.



GROUND FLOOR

- VESTIBULE
- GRAND HALLWAY
- LOUNGE
20' 4" x 15' 6" (6.2m x 4.72m) max
- DINING ROOM
20' x 13' 9" (6.1m x 4.19m) max
- STUDY
12' 8" x 9' 3" (3.86m x 2.82m) plus bay
- INNER HALLWAY
- WC
- KITCHEN/BREAKFAST ROOM
16' 4" x 13' 2" (4.98m x 4.01m)
- REAR LOBBY

FIRST FLOOR

- LANDING
- BEDROOM
16' x 15' 9" (4.88m x 4.8m) max
- BEDROOM
16' x 9' 7" (4.88m x 2.92m)
- BEDROOM
12' 8" x 10' (3.86m x 3.05m)
- BEDROOM
14' 5" x 13' (4.39m x 3.96m)
- ENSUITE
10' 4" x 3' (3.15m x 0.91m)
- LIBRARY
13' 4" x 13' 4" (4.06m x 4.06m) max
- BATHROOM
10' 2" x 6' 8" (3.1m x 2.03m)

SECOND FLOOR

- LANDING
- BEDROOM
10' 4" x 9' 4" (3.15m x 2.84m)
- BEDROOM
10' x 7' 10" (3.05m x 2.39m)
- BATHROOM
14' 3" x 9' 4" (4.34m x 2.84m)

OUTSIDE

- EXTENSIVE GARDENS
- DOUBLE GARAGE
- OUTHOUSES