



£165,000

2 MURRAY STREET, SCARBOROUGH, YO12 5AB

- Semi Detached House
- Four Bedrooms
- Modern Kitchen And Bathroom
- Gas Central Heating

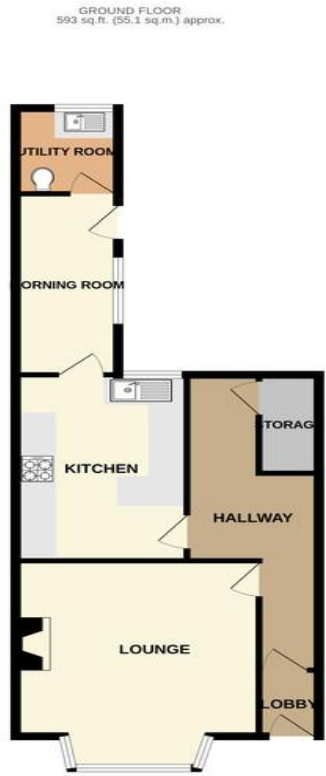
A GREAT TOWN CENTRE SEMI DETACHED PERIOD PROPERTY, SITUATED JUST OFF FALS GRAVE, CLOSE TO THE TOWN CENTRES AMENITIES AND RAILWAY STATION. MODERN KITCHEN AND BATHROOM, WELL PRESENTED PATIO GARDEN TO THE REAR, WITH NO ONWARD CHAIN.



TIPPLE UNDERWOOD ESTATE AGENTS
3 Coldyhill Lane, Scarborough, North
Yorkshire, YO12 6SF

CONTACT
www.tippleunderwood.co.uk
01723 350299
mail@tippleunderwood.co.uk

Agents Note: Whilst every care has been taken to prepare these sales particulars, they are for guidance purposes only. All measurements are approximate and for general guidance purposes only and whilst every care has been taken to ensure their accuracy, they should not be relied upon and potential buyers are advised to recheck the measurements.



TOTAL FLOOR AREA: 1524 sq.ft. (141.6 sq.m.) approx.
Whilst every attempt has been made to ensure the accuracy of the floorplan contained here, measurements of doors, windows, rooms and any other items are approximate and no responsibility is taken for any error, omission or mis-statement. This plan is for illustrative purposes only and should be used as such by any prospective purchaser. The services, systems and appliances shown have not been tested and no guarantee as to their operability or efficiency can be given.
Made with Metrobox ©2025



Property Description

The property when briefly described comprises entrance lobby, hallway, bay fronted lounge, rear facing breakfast kitchen, morning room and utility/WC to the ground floor. On the first floor are two double bedrooms and modern bathroom. Two further double bedrooms to the floor above. Enclosed patio garden to the rear and forecourt front garden which could provide off street parking with the necessary permissions.



GROUND FLOOR

LOBBY

HALLWAY

LOUNGE
15' 8" x 13' 3" (4.78m x 4.04m)

KITCHEN/DINER
14' x 9' 8" (4.27m x 2.95m)

MORNING ROOM
13' 8" x 5' 10" (4.17m x 1.78m)

UTILITY ROOM
6' 6" x 5' 7" (1.98m x 1.7m)

FIRST FLOOR

LANDING

BEDROOM
13' 9" x 12' 4" (4.19m x 3.76m)

BEDROOM
14' 2" x 11' 6" (4.32m x 3.51m)

BATHROOM
10' 5" x 4' 6" (3.18m x 1.37m)

SECOND FLOOR

BEDROOM
14' 3" x 11' 6" (4.34m x 3.51m)

BEDROOM
17' x 12' 9" (5.18m x 3.89m)

OUTSIDE

PATIO GARDEN