



£230,000

14 ST. LUKES CRESCENT, SCARBOROUGH, YO12 6TD

- Semi-Detached Bungalow
- Two Bedrooms
- Modernisation Required
- Garage And Gardens

TUCKED AWAY ON A CORNER PLOT IS THIS WELL APPOINTED TWO BEDROOM SEMI DETACHED BUNGALOW. IN NEED OF UPDATING AND MODERNISATION THIS WILL MAKE A FANTASTIC HOME FOR THE FUTURE OWNER. SITUATED IN A CONVENIENT LOCATION WITH THE NORTH SIDES AMENITIES CLOSE TO HAND.



**TIPPLE UNDERWOOD ESTATE
AGENTS**

3 Coldyhill Lane, Scarborough, North
Yorkshire, YO12 6SF

CONTACT

www.tippleunderwood.co.uk

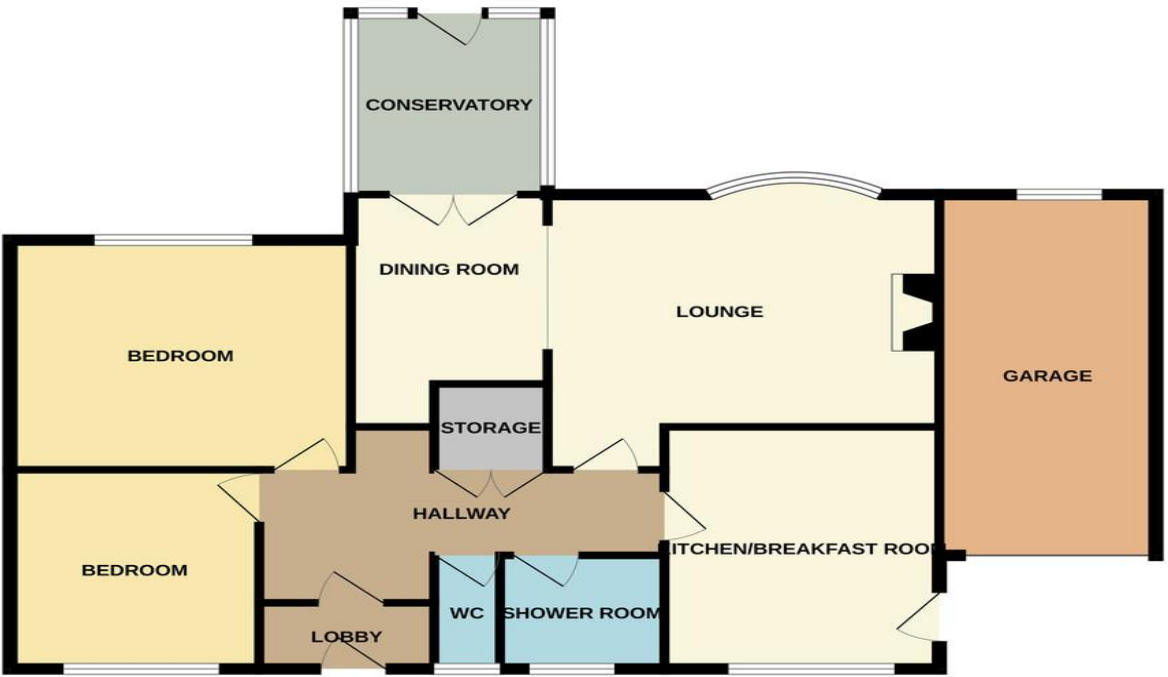
01723 350299

mail@tippleunderwood.co.uk

Agents Note: Whilst every care has been taken to prepare these sales particulars, they are for guidance purposes only. All measurements are approximate and for general guidance purposes only and whilst every care has been taken to ensure their accuracy, they should not be relied upon and potential buyers are advised to recheck the measurements

14 St. Lukes Crescent, Scarborough, YO12 6TD

GROUND FLOOR
1075 sq.ft. (99.9 sq.m.) approx.



TOTAL FLOOR AREA : 1075 sq.ft. (99.9 sq.m.) approx.
Whilst every attempt has been made to ensure the accuracy of the floorplan contained here, measurements of doors, windows, rooms and any other items are approximate and no responsibility is taken for any error, omission or mis-statement. This plan is for illustrative purposes only and should be used as such by any prospective purchaser. The services, systems and appliances shown have not been tested and no guarantee as to their operability or efficiency can be given.
Made with Metropix ©2025



Property Description

This semi-detached bungalow when briefly described comprises entrance lobby hallway, rear facing kitchen, bow fronted lounge, open plan to the dining room, conservatory, two well-appointed bedrooms, shower room and a separate w/c. Attached garage, long driveway and generous gardens.



GROUND FLOOR

ENTRANCE LOBBY

HALLWAY

KITCHEN
12' 6" x 10' 8" (3.81m x 3.25m)

LOUNGE
15' 2" x 12' 3" (4.62m x 3.73m)

DINING ROOM
9' 9" x 7' 7" (2.97m x 2.31m)

CONSERVATORY
9' 4" x 7' 9" (2.84m x 2.36m)

BEDROOM
13' 2" x 11' 10" (4.01m x 3.61m)

BEDROOM
10' 6" x 9' 8" (3.2m x 2.95m)

SHOWER ROOM

WC

OUTSIDE

GARAGE
18' 5" x 8' 8" (5.61m x 2.64m)

GARDENS