



Score	Energy rating	Current	Potential
92+	A		
81-91	B		81 B
69-80	C		
55-68	D	64 D	
39-54	E		
21-38	F		
1-20	G		





**£220,000**

27 HARVEST WAY, EASTFIELD, SCARBOROUGH, YO11 3ND

- Detached House
- Three Bedrooms
- Well Presented
- Garage And Gardens

MODERN DETACHED FAMILY HOME SITUATED IN THE NORTH OF EASTFIELD OFFERING THREE BEDROOMS, CONSERVATORY, LAWNED GARDEN, GARAGE AND OFF-ROAD DRIVEWAY PARKING. THE PROPERTY ALSO BENEFITS FROM UPVC DOUBLE GLAZING AND CENTRAL HEATING.

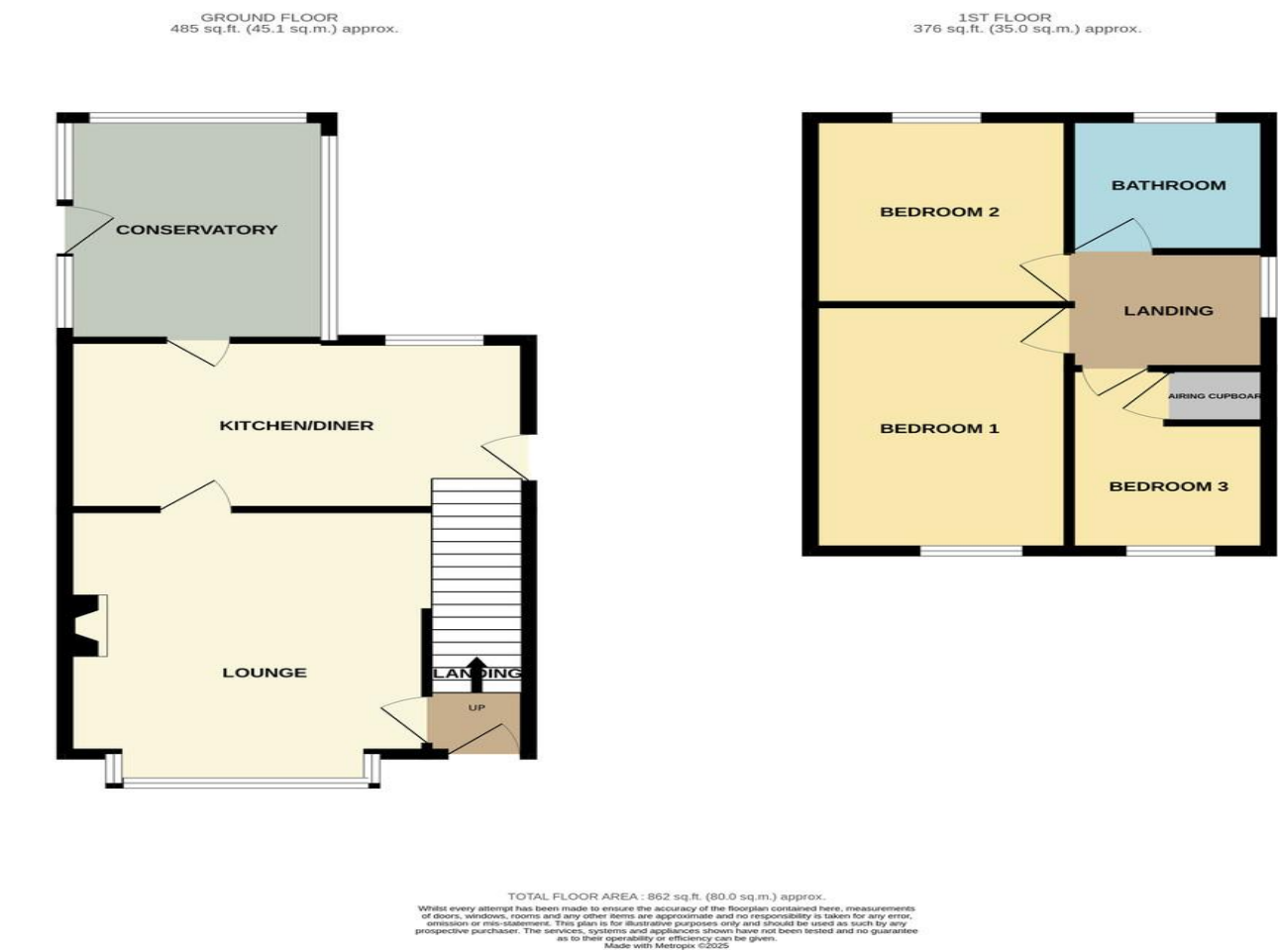


TIPPLE UNDERWOOD ESTATE AGENTS  
3 Coldyhill Lane, Scarborough, North Yorkshire, YO12 6SF

CONTACT  
www.tippleunderwood.co.uk  
01723 350299  
mail@tippleunderwood.co.uk

Agents Note: Whilst every care has been taken to prepare these sales particulars, they are for guidance purposes only. All measurements are approximate and for general guidance purposes only and whilst every care has been taken to ensure their accuracy, they should not be relied upon and potential buyers are advised to recheck the measurements





## Property Description

This beautifully presented detached family house is presented to a superb standard throughout and when briefly described comprises entrance hall, bay fronted lounge, rear facing open plan kitchen diner, and a modern conservatory. On the first floor are three well-appointed bedrooms and modern house bathroom. Sited on a corner plot with garden to three sides, shielded by hedging, mainly laid to lawn with timber deck and timber shed. Driveway to the side leading to the detached garage.



### GROUND FLOOR

HALLWAY

LOUNGE  
16' 8" x 12' 9" (5.08m x 3.89m)

KITCHEN/DINER  
16' 2" x 9' 4" (4.93m x 2.84m)

CONSERVATORY  
12' x 9' 2" (3.66m x 2.79m)

### FIRST FLOOR

LANDING

BEDROOM  
14' 7" x 9' 9" (4.44m x 2.67m)

BEDROOM  
9' 10" x 9' 8" (3m x 2.95m)

BEDROOM  
10' 6" x 7' 2" (3.2m x 2.18m) max

BATHROOM

### OUTSIDE

GARDENS

GARAGE